



### 2007-2008 - Fast Facts on MU International Students\*

1.

Educ. Level	Fall 2005	Fall 2006	Fall 2007
Graduate/Pro	1083	1136	<b>1135</b>
Undergraduate	279	278	<b>308</b>
Total:	1362	1414	<b>1443</b>

2.

Class	Female	Male	Unknown	Total
Freshman	53	56		<b>109</b>
Sophomore	18	30		<b>48</b>
Junior	30	19		<b>49</b>
Senior	52	50		<b>102</b>
Graduate	496	632	2	<b>1130</b>
Professional	3	2		<b>5</b>
Total:	652	789	2	<b>1443</b>

3.

Visa Status	Ugrad	Grad	Pro	Total
F1	246	980	4	<b>1230</b>
J1	51	121		<b>172</b>
Other	11	29	1	<b>41</b>
Total:	308	1130	5	<b>1443</b>

### 4. MU International Student Enrollment Trends

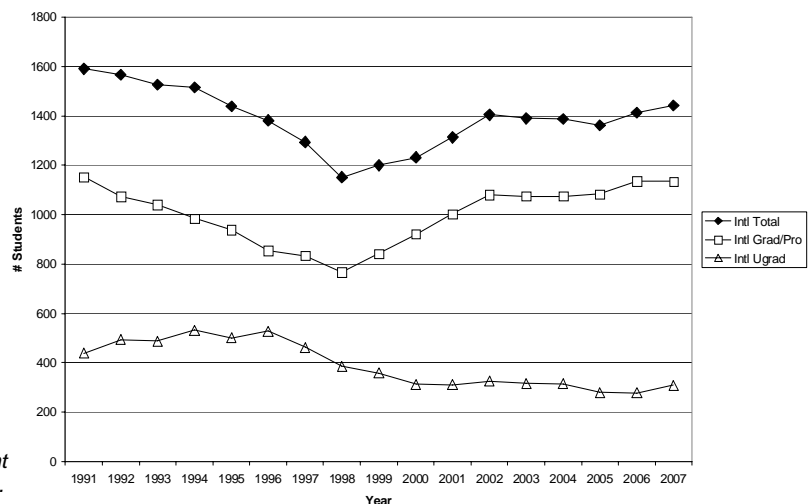
Term	Total	Grad/Pro	Ugrad
1991	1592	1153	439
1992	1567	1074	493
1993	1527	1040	487
1994	1516	984	532
1995	1439	938	501
1996	1383	854	529
1997	1295	833	462
1998	1152	767	385
1999	1200	842	358
2000	1233	921	312
2001	1314	1003	311
2002	1405	1080	325
2003	1391	1075	316
2004	1389	1075	314
2005	1362	1083	279
2006	1414	1136	278
2007	1443	1135	308

### Fall 2007 International Student Enrollment Up 2.0%

MU's Fall 2007 international student enrollment increased 2.0 % from the previous year with excellent gains among undergraduate students, from 278 to 308, an 11% increase. International graduate student enrollment remained relatively unchanged at 1135, yet still accounts for nearly 20% of graduate enrollments. Overall, international students represented 5.1% of MU's total enrollment of 28,070, the 5th straight year of record breaking enrollments.

College/School	Ugrad	Grad/Pro	Total	% Total
A&S	96	307	403	27.9
Business	36	70	106	7.3
CAFNR	19	116	135	9.4
Education	2	105	107	7.4
Engineering	78	278	356	24.7
Health Prof.	3	0	3	0.2
HES	8	29	37	2.6
Journalism	15	71	86	6.0
Law	0	10	10	0.7
Medicine	0	41	41	2.8
Nursing	5	4	9	0.6
Vet Med	0	9	9	0.6
Social Work	0	4	4	0.3
Non-Div Ugrad	46	0	46	3.2
Non-Div Grad	0	91	91	6.3

MU International Student Enrollment 1991-2007



\*ISSS Fast Facts data tabulations are estimates based on the Student Exchange Visitor Information System (SEVIS) and MU Registrar data. For additional stats: <http://registrar.missouri.edu/statistics/index.php>